

LED solutions

Industry

Lighting solutions for industrial applications



TRIDONIC



Lighting solutions for industrial applications

Your benefits

Energy and cost savings thanks to

- extended temperature ranges
- integrated dimming function
- very low standby power consumption

Ideal colour rendering, high module efficiency, adapted illuminance levels and light colours

- thanks to perfectly matched converter and module systems

The integrated constant light function ensures constant luminous intensity throughout the life of the system

Extreme reliability and reduced maintenance thanks to

- long life-time
- increased dielectric strength (Surge/Burst)
- constant luminous flux throughout the life of the system

Versatile applications thanks to

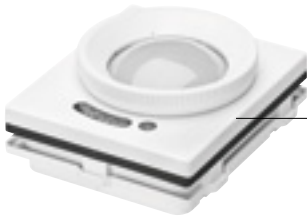
- connections to sensors and light management systems
- integration of the components in existing emergency lighting systems

Lighting solutions for industrial applications

High-bay sensor, combinable with system solutions, for industrial applications



basicDIM ILD G2
SFI 20 10DPI WH



basicDIM ILD G2 SFI
20 16DPI WH

At a glance:

basicDIM ILD G2

- PIR sensors with ambient light and motion detection
- Integrated DALI-2 compatible application controller
- For up to 20 DALI-2 drivers
- ILD G2 is supporting up to 4 motion-slave sensors MSensor G3
- Direct connection to DALI power source
- Easy commissioning and control via IR remote control
- Low-, mid- and high-bay versions for different room heights up to 16 meters
- Ideal for single luminaires and rooms, corridors or smaller areas

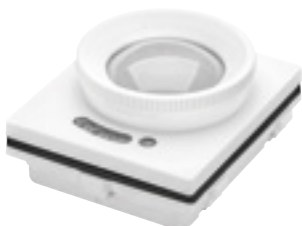


MSensor G3 SFI 30 PIR 10DPI
For mid-bay application

At a glance:

MSensor G3

- PIR sensor with ambient light and motion detection
- DALI 2 certified
- as DALI 2 input device can be integrated in various wired and wireless Lighting Management Systems
- Slim housing for luminaire installation
- With IP66 protection (mid-bay) and IP65 protection (high-bay)
- Power supply via DALI line
- Easy commissioning via DALI Application Controller
- Low-, mid- and high-bay versions for different room heights up to 18 meters
- For scalable DALI systems



MSensor G3 SFI 30 PIR 16DPI
For mid-bay application

Industry

Lighting solutions for industrial applications



Reliable light for every need

Industrial environments place special requirements on lighting systems. Long operating times and critical atmospheres place heavy demands on any lighting system, and maintenance is often associated with major effort and high costs.

The Tridonic range of products are perfect replacements for fluorescent and HID light sources as they meet all the requirements for industrial lighting.

Heavy industry

Because of its complex production process, the heavy industry is characterised by extreme environmental conditions. Multiple cooling and heating steps in the production process lead to major differences in temperature within the production hall. The luminaires are continuously exposed to vibrations, shocks, enormous forces and a high level of dirt. The luminaires are continuously exposed to vibrations, shocks, enormous forces and a high level of dirt. A high degree of reliability is essential to enable continuous operation.

Lighting solutions for industrial applications



Deep-freeze warehouses

According to the HACCP guidelines, the prescribed minimum temperature for deep-freeze warehouses and deep-freeze logistics centres is below -18°C . Depending on the products the temperatures are therefore between -18°C and -30°C . In order to avoid devices malfunctioning at these extreme temperatures, cold-resistant equipment and electronics suitable for deep-freezing must be used and precise placement ensured.

Driver for industrial applications

Reliable, robust and durable

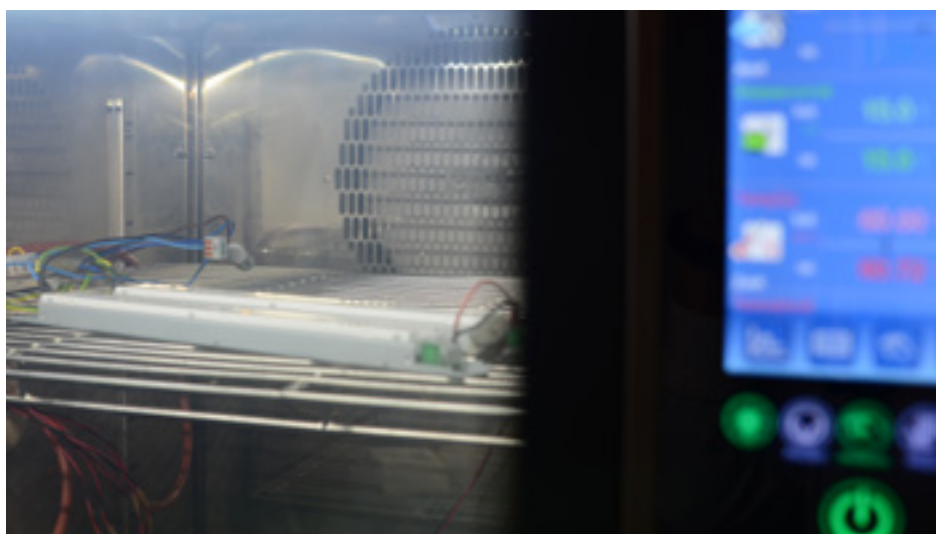
Qualities	Standard applications (office, supermarket,...)	Tridonic Industry
Typical ambient temperatures	-10°C...+50°C	-40°C...+70°C
Dielectric strength (surge/burst)	2 kV	4 kV
Max. Failure rate (50,000h, ta=50°C)	10%	2.5%

LED Driver from Tridonic for industrial applications have been designed to reduce stress on the components and lead to long life (thermal load/peak voltage). In addition, the circuit design is tested with increased vibration levels that reflect the harsher operating conditions in industrial applications.



The test station in Dornbirn is optimized for the toughest conditions

- Ambient temperatures of up to
- up to -40 °C and up to +80 °C
- 4kV transient protection
- 4 times longer life and 4 times lower failure rate than standard devices (at 50,000h, Ta 50 °C)
- Extended shock and vibration tests
- according to EN 60068



Test station for ambient temperature in Dornbirn (Austria)

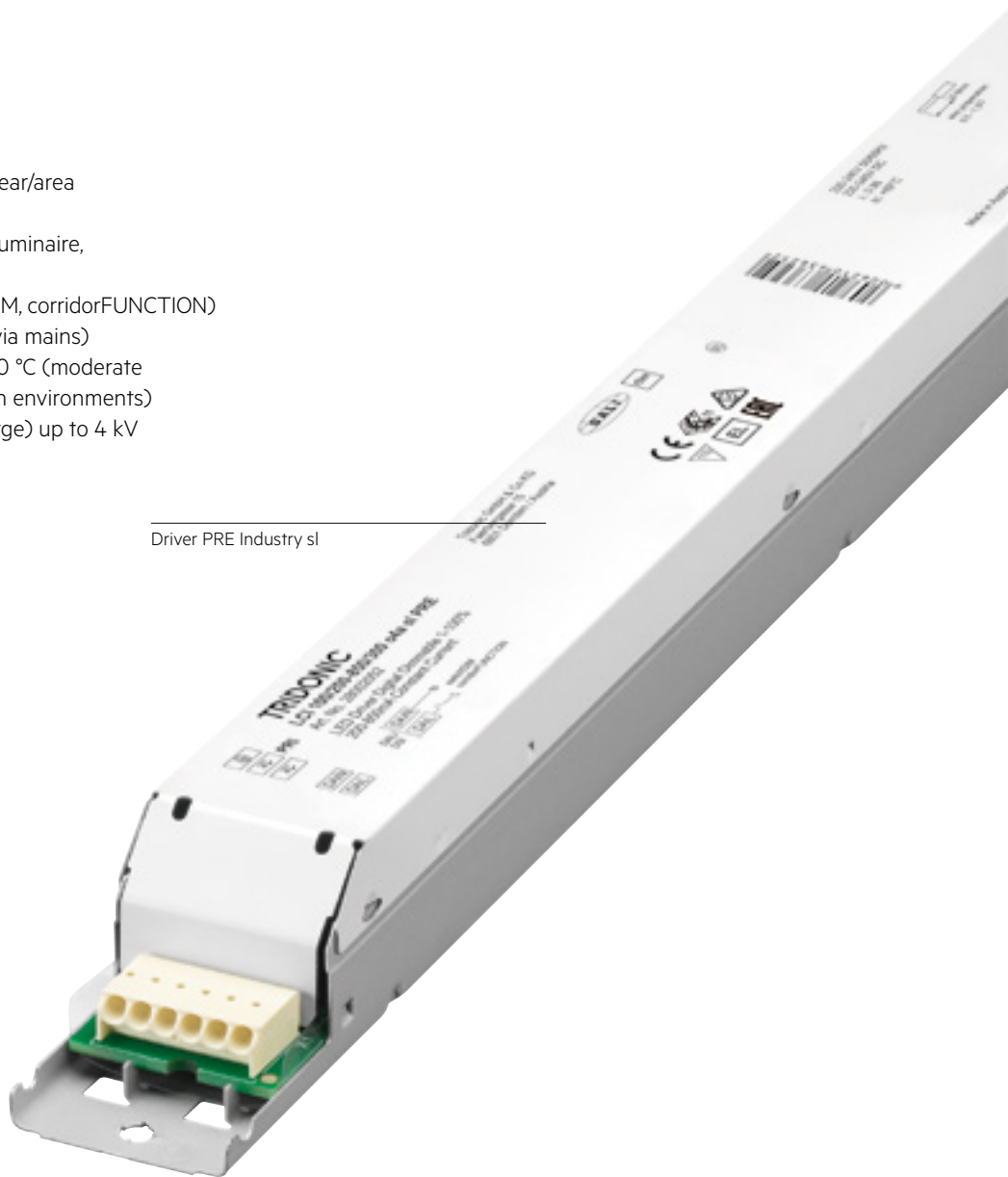
Driver premium (PRE) Industry

At a glance:

Driver premium (PRE) Industry

- Constant current built-in LED Driver for linear/area lighting in industry applications
- lumDATA for storage and transmission of luminaire, energy and diagnostic data
- Interfaces: one4all (DALI DT 6, DSI, switchDIM, corridorFUNCTION) ready2mains (configuration and dimming via mains)
- Extended temperature range of -25 to +50 °C (moderate environments) and -40 °C to +70 °C (tough environments)
- Suitable for mains voltage peaks (burst/surge) up to 4 kV
- Dimming range 1-100 %
- 5- or 8-year guarantee
- Life-time of 100,000 hours

Driver PRE Industry sl



Driver premium (PRE) | Linear

Type	Output current (mA)	Output power (W)	Output voltage range* (V)	Input voltage (V)	Size (mm)	Guarantee (Year)	environment temperature range (°C)	Order No.
premium (PRE) Industry for tough environments								
LCI 100/200-850/300 o4a sl PRE	200-850	100	80-300	220-240	360 x 30 x 28	8	-40 to +70	28002052
LCI 150/325-1050/300 o4a sl PRE	325-1,050	150	80-300	220-240	360 x 30 x 28	8	-40 to +70	28002053
premium (PRE) Industry for moderate environments								
LCI 150/325-1050/300 o4a sl PRE mod	325-1,050	150	80-300	220-240	360 x 30 x 28	5	-25 to +50	28002054

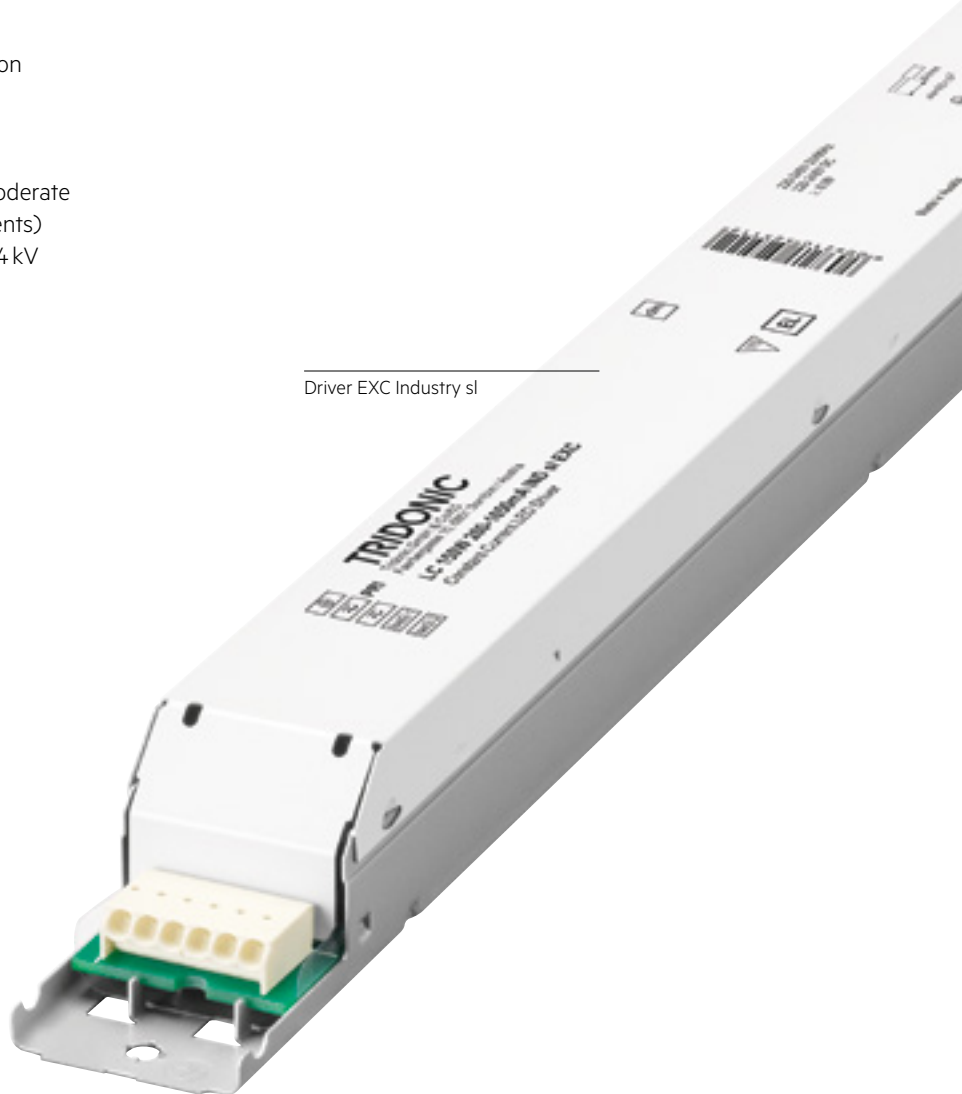
* Depending on the selected output current. Further details can be found in datasheet

Driver excite (EXC) Industry

At a glance:

Driver excite (EXC) Industry

- Constant-current LED Driver for luminaire installation
- For linear high-bay luminaires
- ready2mains technology: configuration and dimming via the mains cable
- Extended temperature range of -25 bis +60 °C (moderate environments) and -40 to +70 °C (tough environments)
- Increased dielectric strength (Surge/Burst) of 4 kV/4 kV
- Adjustable current from 200 - 1,050 mA
- Type of protection IP20
- Life-time of 100,000 or 200,000 h
- 5- or 8-year guarantee



Driver EXC Industry sl

Driver excite (EXC) | Linear

Type	Output current (mA)	Output power (W)	Output voltage range* (V)	Input voltage (V)	Size (mm)	environment temperature range (°C)	Order No.
Excite (EXC) Industry for tough environments							
LC 150W 200-1050mA IND sl EXC	200 - 1,050	150	300	220-240	360 x 30 x 28	-40 to +70	28000691
Excite (EXC) Industry for moderate environments							
LC 150W 200-1050mA sl EXC	200 - 1,050	150	300	220-240	360 x 30 x 28	-25 to +60	28001698

*Depending on the current selected output. Further details can be found in datasheet.

Driver excite (EXC) Industry



Driver EXC non-SELV

At a glance:

Driver excite (EXC) Industry with NFC

- Constant-current built-in LED Driver, particularly suitable for industrial applications in tough environments with elevated ambient temperatures such as cold warehouses or factories
- Adjustable output current between 100 and 700 mA
- Extended temperature range of -25 bis +60 °C (moderate environments) and -40 to +80°C (tough environments)
- Increased dielectric strength (Surge/Burst) of 4 kV/4 kV
- Adjustable output current (I-SELECT 2 resistor or NFC)
- Type of protection IP20
- Life-time up to 100,000 h
- 8-year guarantee

Driver excite (EXC) | Linear | Fixed-Output Industry

Type	Output current (mA)	Output power (W)	Output voltage range* (V)	Input voltage (V)	Size (mm)	Order No.
LCI 75W/100-700 mA 250V flexC NF Ip EXC3	100 – 700	75	250	220-240	360 x 30 x 21	87500919
LCI 150W/250-1050 mA 300V flexC NF Ip EXC3	250 – 1,050	105	300	220-240	360 x 30 x 21	87500920

Further details can be found in datasheet.



Industry Driver EXC3 h21/28

At a glance:

Driver EXC h21/28 Industry with NFC

- Efficiency up to 96
- Large operating window: 250 to 1,200 mA
- Currents flexibly adjustable via NFC
- Wide temperature range: -40 °C - 80 °C
- 220 W version for luminaires with very high lumen output up to 30,000 lm
- Excellent performance at high temperatures
- Lifetime up to 90,000 hours (at ta = 70 °C)

Driver excite (EXC3) | Linear | Fixed-Output Industry | with NFC

Type	Output current (mA)	Output power (W)	Output voltage range* (V)	Input voltage (V)	Size (mm)	Order No.
LCI 75W/250-500 mA 230V flexC NF h21 EXC3	250-500	75	300	220-240	360 x 30 x 21	28003510
LCI 105W/350-500 mA 230V flexC NF h21 EXC3	350-500	105	300	220-240	360 x 30 x 21	28003511
LCI 150W/500-850 mA 230V flexC NF h28 EXC3	100 – 700	150	300	220-240	360 x 30 x 28	28003512
LCI 220W/800-1200 mA 230V flexC NF h28 EXC3	250 – 1,050	220	300	220-240	360 x 30 x 28	28003513

You can find more details in our data sheet

smartSWITCH 12DP

Switching sensors for industrial applications



smartSWITCH HF 12DP MB f



smartSWITCH HF 12DP MB S f

Sensor smartSWITCH HF 12DP MB

This sensor for luminaire fixtures combines daylight and motion detection in two ultra-slimline housing variants with various fixing points. It is especially suitable for industrial applications and extrem heights. The high-frequency technology means that motion can easily be detected, even through glass and plastic. In addition to the detection range, a threshold for the ambient light and the delay time before switch off can also be set by the nine dip switches in the sensors. The bright-out function prevents the light from switching on when there is sufficient daylight.

At a glance:

smartSWITCH 12DP

- Daylight and motion sensor
- Installation heights up to 12 m
- Temperature range from -20 to +70 °C
- Adjustable detection range (100 to 10 %)
- Bright-out function and support for corridorFUNCTION

smartSWITCH HP 12DP MB S f

Type	Size (mm)	Order No.
smartSWITCH HF 12DP MB f	70 x 36.5 x 24.5	28003498
smartSWITCH HF 12DP MB S f	58 x 52 x 24.5	28003499

Further details can be found in the datasheet



Module LLE high robust excite (EXC)

At a glance:

Modul LLE 24 mm EXC

- Efficacy up to 154 lm/W
- Extended temperature range in combination with industrial drivers
- Perfect light homogeneity when stringing together of several LED modules
- Long lifetime up to 100,000 hours
- 8 years guarantee

Module LLE 24x280 mm EXC



Module LLE high robust excite (EXC)

Type	Colour-temperature (K)	CRI	Typ. luminous flux ¹⁾ Operation mode (lm)		Typ. power consumption ¹⁾ Operation mode (W)		Module efficacy (lm/W) (T _p =65 °C)		Size (mm)	Order No.
			High Efficiency	High Output	High Efficiency	High Output	High Efficiency	High Output		
LLE 24x280mm 2000lm 830 EXC	3,000	>80	2,230	2,900	15.9	23.9	140	121	24x280	89602077
LLE 24x280mm 2000lm 840 EXC	4,000	>80	2,240	2,940	15.9	23.9	141	123	24x280	89602078
LLE 24x280mm 2000lm 850 EXC	5,000	>80	2,240	2,940	15.9	23.9	141	123	24x280	89602079
LLE 24x280mm 2000lm 865 EXC	6,500	>80	2,240	2,940	15.9	23.9	141	123	24x280	89602080
LLE 24x560mm 4000lm 830 EXC	3,000	>80	4,460	5,800	31.8	47.8	140	140	24x560	89603034
LLE 24x560mm 4000lm 840 EXC	4,000	>80	4,480	5,880	31.8	47.8	141	141	24x560	89603035
LLE 24x560mm 4000lm 850 EXC	5,000	>80	4,480	5,880	31.8	47.8	141	141	24x560	89603036
LLE 24x560mm 4000lm 865 EXC	6,500	>80	4,480	5,880	31.8	47.8	141	141	24x560	89603037

¹⁾ Tolerance range for optical and electrical data ±10 %

Present worldwide

AUSTRALIA

Tridonic Australia Pty Ltd
2/7 Millner Ave
Horsley Park, NSW 2175
Australia
T +61 2 9832 6600
F +61 2 9832 6688
www.tridonic.com
infoau@tridonic.com

AUSTRIA

Tridonic GmbH & Co KG
(Headquarters)
Färbergasse 15
6851 Dornbirn, Austria
T +43 5572 395-0
F +43 5572 20176
www.tridonic.com
sales@tridonic.com

Tridonic GmbH & Co KG
Sales Austria
Archenweg 58
6022 Innsbruck, Austria
T +43 512 3321 554
F +43 512 3321 995554
www.tridonic.com
vertrieb.austria@tridonic.com

CHINA

Tridonic (Shanghai) Co., Ltd.
(Headquarters)
Room 602, Building B
Zhongshan International Plaza
No. 789 Tianshan Road
Shanghai, 200335, China
T +86 21 52400 599
F +86 21 52400 230
www.tridonic.com
china@tridonic.com

Tridonic (Shanghai) Co., Ltd.
Beijing Branch
Room 1207, No. 3, Yard 1
Tian Xin Street,
Fang Shan District
Beijing, 102446, China
T +86 10 6522 6163
F +86 10 6522 7003
www.tridonic.com
china@tridonic.com

Tridonic (Shanghai) Co., Ltd.
Guangzhou Branch
Room 505, R & F Profit Plaza
76 Huangpu Xi Road, Tianhe District
Guangzhou, 510623, China
T +86 20 3839 2483
F +86 20 3839 2482
www.tridonic.com
china@tridonic.com

FRANCE

Tridonic France SARL
8 Rue de Bruxelles
ZI Krafft
67150 Erstein, France
T +33 3 88 59 62 70
F +33 3 88 59 62 75
www.tridonic.fr
info.france@tridonic.com

GERMANY

Tridonic Deutschland GmbH
Edisonallee 1
89231 Neu-Ulm
Germany
T +49 731 176629-0
F +49 731 176629-15
www.tridonic.de
vertrieb.deutschland@tridonic.com

ITALY

Tridonic Italia srl
Via G. Savelli, 86
35129 Padova
Italy
T +39 049 89 45 127
www.tridonic.it
vendite.italia@tridonic.com

KOREA

Tridonic Korea LLC
Mark Kim
#808 HanHwa BizMetro II
551-24 Yangcheon-ro
Gangseo-gu Seoul
Republic of Korea (South)
T +82 10 9922 3878
www.tridonic.kr
mark.kim@tridonic.com

MALAYSIA

Tridonic Malaysia Sdn Bhd
V03-10-01 Designer Office,
Lingkaran SV,
Sunway Velocity, Cheras
55100 Kuala Lumpur
Malaysia
T +60 3 2733 6484
T +60 3 2733 6485
www.tridonic.com
asean@tridonic.com

MIDDLE EAST

Tridonic Middle East (FZE)
Warehouse LB 4 Blue Shed Area,
JAFZA North, Jebel Ali
P.O. Box 17972
Dubai, United Arab Emirates
T +971 4 8833 664
F +971 4 8833 665
www.tridonic.ae
sales.middleeast@tridonic.com

NEW ZEALAND

Tridonic New Zealand
PO Box 71134, Rosebank
Auckland 1348
27 Jomac Place, Avondale
Auckland 1026
T +64 9820 1119
F +64 9820 4471
www.tridonic.com
sales@tridonic.co.nz

POLAND

Tridonic Rep. Office Poland
Poland
www.tridonic.com
marek.michalski@tridonic.com

PORTUGAL

Tridonic Portugal, Unipessoal Lda.
Rotunda Engenheiro
Edgar Cardoso, 23, piso 8
Vila Nova de Gaia 4400-676
Portugal
T +351 938 448 467
www.tridonic.com
ventas@tridonic.com

SINGAPORE

Tridonic S. E. A. Pte Ltd
158 Kallang Way
#06-02
349245 Singapore
Singapore
T +65 6749 9071
F +65 6293 3700
www.tridonic.com
asean@tridonic.com

SOUTH AFRICA

Tridonic SA (Pty) Ltd
Unit A7, Centurion Business Park
Cnr. Bosmansdam Road &
Democracy Way
Milnerton, SA, 7441
South Africa
T +27 21 110 5687
www.tridonic.com
info@tridonic.com

SPAIN

Tridonic Iberia, S.L.
Calle Carpinteros nº 8, 2a
28670 Villaviciosa de Odón
Spain
T +34 916 162 095
www.tridonic.es
ventas@tridonic.com

SWITZERLAND

Tridonic AG
Obere Allmeind 2
8755 Ennenda
Switzerland
T +41 55 645 4747
www.tridonic.ch
vertrieb.schweiz@tridonic.com

TURKEY

Tridonic Aydınlatma Tic.LTD.ŞTİ.
Kemankeş Mah., Necatibey cad.
Akçe Sok., Akçe Han 10
34420 Karaköy / Beyoğlu
Istanbul, Turkey
T +90 212 244 78 05
F +90 212 244 78 06
www.tridonic.com
satis@tridonic.com

UNITED KINGDOM

Tridonic UK Limited
Unit 5 Cherrywood
Chineham Business Park
Stag Oak Lane, Chineham
RG24 8WF Basingstoke
Hampshire
United Kingdom
T +44 1256 374300
www.tridonic.com
enquiries.uk@tridonic.com

USA

Tridonic Inc. USA
3300 Route 9W
Highland, NY 12528
United States
www.tridonic.us
sales.us@tridonic.com

Headquarters

Tridonic GmbH & Co KG
Färbergasse 15 | 6851 Dornbirn, Austria
T +43 5572 395-0 | F +43 5572 20176
www.tridonic.com | sales@tridonic.com

Light you want to follow.

